

Novacel Eden Alpha

33,2mm / 13.07 inches

How I saw my laptop display.

Blue area = blurry vision

White area = clear vision

OPTOMETRY AND VISION SCIENCE
Copyright © 2000 American Academy of Optometry

ORIGINAL ARTICLE

A New Method for Determining Prismatic Effects in Cylindrical Spectacle Corrections

ARNULF REMOLE, BFA, OD, MS, PhD, FAAO

School of Optometry, University of Waterloo, Waterloo, Ontario, Canada

ABSTRACT: This study presents a new method of finding differential prismatic effects in an anisometric spectacle correction containing cylindrical lenses. The calculations are based on dynamic spectacle magnifications rather than Prentice's rule. If an imaginary circular object is considered, cylindrical lenses will produce elliptical far point images, which can be superimposed on the spectacle plane for comparison. The difference between left and right ellipses, in any meridian, then represents the distance the eyes have to diverge in order to fuse the object of regard. This distance can be translated into prism diopters of differential prismatic effect. Although the conventional methods for finding this effect often result in very large errors, the new method can be performed with great accuracy. In part, this is because it uses the actual eccentricities of the two eyes rather than an assumed average eccentricity. Moreover, the method includes considerations of base curves and center thickness. Contrary to the classical methods, it can thus be applied to clinically realistic lenses. (Optom Vis Sci 2000;77:211–220)

Downloaded from https://journals.lww.com/optvissci by BhDMf5ePHKav1zEoum1tQIN4a+KkLhZgbsIHodXM10hCQ

How I saw my my mobile phone.
Blue area = blurry vision
White area = clear vision

School of Optometry, University of Waterloo, Waterloo, Ontario, Canada

ABSTRACT: This study presents a new method of finding differential prismatic effects in an anisometric spectacle correction containing cylindrical lenses. The calculations are based on dynamic spectacle magnifications rather than Prentice's rule. If an imaginary circular object is considered, cylindrical lenses will produce elliptical far point images, which can be superimposed on the spectacle plane for comparison. The difference between left and right ellipses, in any meridian, then represents the distance the eyes have to diverge in order to fuse the object of regard. This distance can be translated into prism diopters of differential prismatic effect. Although the conventional methods for finding this effect often result in very large errors, the new method can be performed with great accuracy. In part, this is because it uses the actual eccentricities of the two eyes rather than an assumed average eccentricity. Moreover, the method includes considerations of base curves and center thickness. Contrary to the classical methods, it can thus be applied to clinically realistic lenses. (*Optom Vis Sci* 2000;77:211-220)

Key Words: reading addition, segments, adds, binocular field, decentration

Finding the differential prismatic effect at the near visual point is a classical problem in ophthalmic optics. Until very recently, nearly all textbooks used Prentice's rule as a basis for this calculation. Prentice's rule, in its basic form, is usually stated as follows:

the chief ray from an object. However, if left and right lenses produce unequal spectacle magnifications, as is usually the case with anisometropic corrections, the left and right lens eccentricities cannot be the same. In a plus lens correction, for example, the eye associated with the higher lens power must look further from the

184,5mm / 7,26 inches

Novacel Eden Alpha

Shamir Autograph Intelligence
33,2mm / 13.07 inches

How I saw my laptop display.

Blue area = blurry vision

White area = clear vision

OPTOMETRY AND VISION SCIENCE
Copyright © 2000 American Academy of Optometry



A New Method for Determining Prismatic Effects in Cylindrical Spectacle Corrections

ARNULF REMOLE, BFA, OD, MS, PhD, FAAO

School of Optometry, University of Waterloo, Waterloo, Ontario, Canada

ABSTRACT: This study presents a new method of finding differential prismatic effects in an anisometropic spectacle correction containing cylindrical lenses. The calculations are based on dynamic spectacle magnifications rather than Prentice’s rule. If an imaginary circular object is considered, cylindrical lenses will produce elliptical far point images, which can be superimposed on the spectacle plane for comparison. The difference between left and right ellipses, in any meridian, then represents the distance the eyes have to diverge in order to fuse the object of regard. This distance can be translated into prism diopters of differential prismatic effect. Although the conventional methods for finding this effect often result in very large errors, the new method can be performed with great accuracy. In part, this is because it uses the actual eccentricities of the two eyes rather than an assumed average eccentricity. Moreover, the method includes considerations of base curves and center thickness. Contrary to the classical methods, it can thus be applied to clinically realistic lenses. (Optom Vis Sci 2000;77:211–220)

Downloaded from https://journals.lww.com/optvissci by BhDMf5ePHKav1ZEoum1tQIN4a+KtLhZgbsIHodXM10hCQ

How I saw my my mobile phone.
Blue area = blurry vision
White area = clear vision

Optom Vis Sci 2000;77:211-220

School of Optometry, University of Waterloo, Waterloo, Ontario, Canada

ABSTRACT: This study presents a new method of finding differential prismatic effects in an anisometric spectacle correction containing cylindrical lenses. The calculations are based on dynamic spectacle magnifications rather than Prentice's rule. If an imaginary circular object is considered, cylindrical lenses will produce elliptical far point images, which can be superimposed on the spectacle plane for comparison. The difference between left and right ellipses, in any meridian, then represents the distance the eyes have to diverge in order to fuse the object of regard. This distance can be translated into prism diopters of differential prismatic effect. Although the conventional methods for finding this effect often result in very large errors, the new method can be performed with great accuracy. In part, this is because it uses the actual eccentricities of the two eyes rather than an assumed average eccentricity. Moreover, the method includes considerations of base curves and center thickness. Contrary to the classical methods, it can thus be applied to clinically realistic lenses. (Optom Vis Sci 2000;77:211-220)

Key Words: reading addition, segments, adds, binocular field, decentration

Finding the differential prismatic effect at the near visual point is a classical problem in ophthalmic optics. Until very recently, nearly all textbooks used Prentice's rule as a basis for this calculation. Prentice's rule, in its basic form, is usually stated as

the chief ray from an object. However, if left and right lenses produce unequal spectacle magnifications, as is usually the case with anisometric corrections, the left and right lens eccentricities cannot be the same. In a plus lens correction, for example, the eye supplied with the higher plus power must look further from the

184,5mm / 7,26 inches
Shamir Autograph Intelligence

Zeiss Individual 2
33,2mm / 13.07 inches

How I saw my laptop display.
Blue area = blurry vision
White area = clear vision

OPTOMETRY AND VISION SCIENCE
Copyright © 2000 American Academy of Optometry



A New Method for Determining Prismatic Effects in Cylindrical Spectacle Corrections

ARNULF REMOLE, BFA, OD, MS, PhD, FAAO

School of Optometry, University of Waterloo, Waterloo, Ontario, Canada

ABSTRACT: This study presents a new method of finding differential prismatic effects in an anisometropic spectacle correction containing cylindrical lenses. The calculations are based on dynamic spectacle magnifications rather than Prentice's rule. If an imaginary circular object is considered, cylindrical lenses will produce elliptical far point images, which can be superimposed on the spectacle plane for comparison. The difference between left and right ellipses, in any meridian, then represents the distance the eyes have to diverge in order to fuse the object of regard. This distance can be translated into prism diopters of differential prismatic effect. Although the conventional methods for finding this effect often result in very large errors, the new method can be performed with great accuracy. In part, this is because it uses the actual eccentricities of the two eyes rather than an assumed average eccentricity. Moreover, the method includes considerations of base curves and center thickness. Contrary to the classical methods, it can thus be applied to clinically realistic lenses. (Optom Vis Sci 2000;77:211–220)

Downloaded from https://journals.lww.com/optvissci by BhDMf5ePHKav1zEoum1tQIN4a+KkLhZgbsIHodXM10hCQ

How I saw my my mobile phone.
Blue area = blurry vision
White area = clear vision

School of Optometry, University of Waterloo, Waterloo, Ontario, Canada

ABSTRACT: This study presents a new method of finding differential prismatic effects in an anisometric spectacle correction containing cylindrical lenses. The calculations are based on dynamic spectacle magnifications rather than Prentice's rule. If an imaginary circular object is considered, cylindrical lenses will produce elliptical far point images, which can be superimposed on the spectacle plane for comparison. The difference between left and right ellipses, in any meridian, then represents the distance the eyes have to diverge in order to fuse the object of regard. This distance can be translated into prism diopters of differential prismatic effect. Although the conventional methods for finding this effect often result in very large errors, the new method can be performed with great accuracy. In part, this is because it uses the actual eccentricities of the two eyes rather than an assumed average eccentricity. Moreover, the method includes considerations of base curves and center thickness. Contrary to the classical methods, it can thus be applied to clinically realistic lenses. (*Optom Vis Sci* 2000;77:211–220)

Key Words: reading addition, segments, adds, binocular field, decentration

Finding the differential prismatic effect at the near visual point is a classical problem in ophthalmic optics. Until very recently, nearly all textbooks used Prentice's rule as a basis for this calculation. Prentice's rule, in its basic form, is usually stated as follows:

the chief ray from an object. However, if left and right lenses produce unequal spectacle magnifications, as is usually the case with anisometropic corrections, the left and right lens eccentricities cannot be the same. In a plus lens correction, for example, the eye associated with the higher refractive error must look further from the

184,5mm / 7,26 inches

Zeiss Individual 2

Varilux X 4D
33,2mm / 13.07 inches

How I saw my laptop display.
Blue area = blurry vision
White area = clear vision

OPTOMETRY AND VISION SCIENCE
Copyright © 2000 American Academy of Optometry

ORIGINAL ARTICLE

A New Method for Determining Prismatic Effects in Cylindrical Spectacle Corrections

ARNULF REMOLE, BFA, OD, MS, PhD, FAAO

School of Optometry, University of Waterloo, Waterloo, Ontario, Canada

ABSTRACT: This study presents a new method of finding differential prismatic effects in an anisometropic spectacle correction containing cylindrical lenses. The calculations are based on dynamic spectacle magnifications rather than Prentice's rule. If an imaginary circular object is considered, cylindrical lenses will produce elliptical far point images, which can be superimposed on the spectacle plane for comparison. The difference between left and right ellipses, in any meridian, then represents the distance the eyes have to diverge in order to fuse the object of regard. This distance can be translated into prism diopters of differential prismatic effect. Although the conventional methods for finding this effect often result in very large errors, the new method can be performed with great accuracy. In part, this is because it uses the actual eccentricities of the two eyes rather than an assumed average eccentricity. Moreover, the method includes considerations of base curves and center thickness. Contrary to the classical methods, it can thus be applied to clinically realistic lenses. (Optom Vis Sci 2000;77:211–220)

Downloaded from https://journals.lww.com/optvissci by BhDMf5ePHKav1zEoum1tQIN4a+KkLhZgbsIHodXM10hCQ

How I saw my my mobile phone.
Blue area = blurry vision
White area = clear vision

School of Optometry, University of Waterloo, Waterloo, Ontario, Canada

ABSTRACT: This study presents a new method of finding differential prismatic effects in an anisometric spectacle correction containing cylindrical lenses. The calculations are based on dynamic spectacle magnifications rather than Prentice's rule. If an imaginary circular object is considered, cylindrical lenses will produce elliptical far point images, which can be superimposed on the spectacle plane for comparison. The difference between left and right ellipses, in any meridian, then represents the distance the eyes have to diverge in order to fuse the object of regard. This distance can be translated into prism diopters of differential prismatic effect. Although the conventional methods for finding this effect often result in very large errors, the new method can be performed with great accuracy. In part, this is because it uses the actual eccentricities of the two eyes rather than an assumed average eccentricity. Moreover, the method includes considerations of base curves and center thickness. Contrary to the classical methods, it can thus be applied to clinically realistic lenses. (*Optom Vis Sci* 2000;77:211–220)

Key Words: reading addition, segments, adds, binocular field, decentration

Finding the differential prismatic effect at the near visual point is a classical problem in ophthalmic optics. Until very recently, nearly all textbooks used Prentice's rule as a basis for this calculation. Prentice's rule, in its basic form, is usually stated as follows:

the chief ray from an object. However, if left and right lenses produce unequal spectacle magnifications, as is usually the case with anisometropic corrections, the left and right lens eccentricities cannot be the same. In a plus lens correction, for example, the eye associated with the higher plus power must look further from the

184,5mm / 7,26 inches

Varilux X 4D

Leica Variovid Volterra Continuum
33,2mm / 13.07 inches

How I saw my laptop display.
Blue area = blurry vision
White area = clear vision

OPTOMETRY AND VISION SCIENCE
Copyright © 2000 American Academy of Optometry



A New Method for Determining Prismatic
Effects in Cylindrical Spectacle Corrections

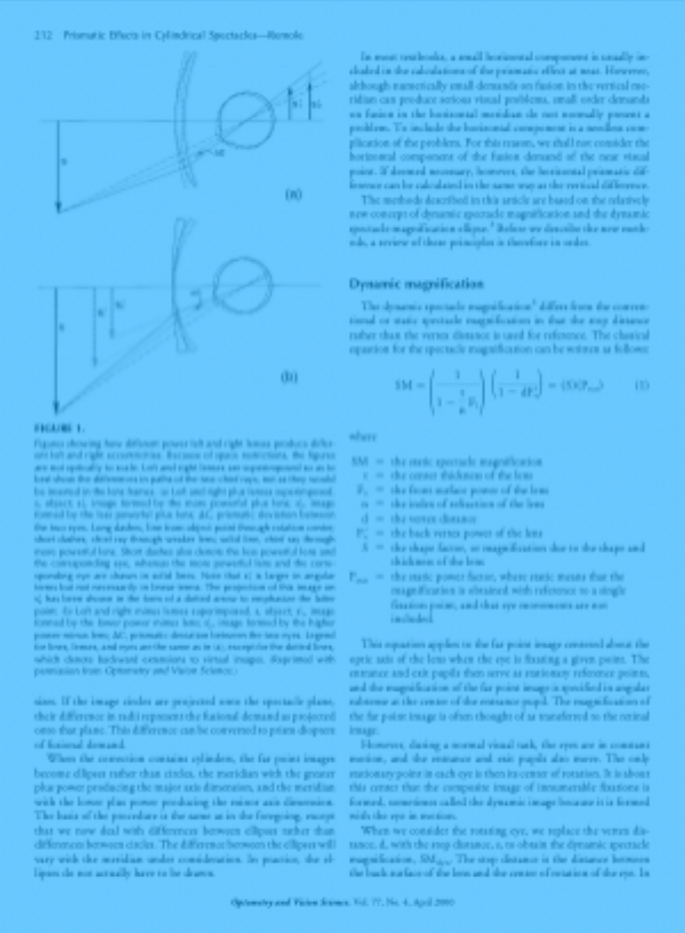
ARNULF REMOLE, BFA, OD, MS, PhD, FAAO

School of Optometry, University of Waterloo, Waterloo, Ontario, Canada

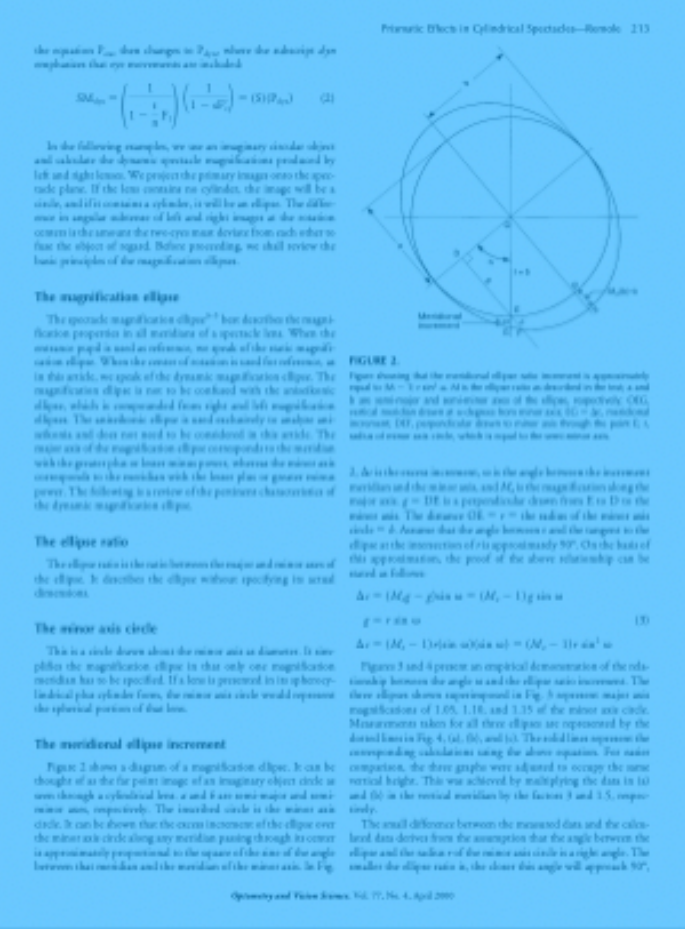
ABSTRACT: This study presents a new method of finding differential prismatic effects in an anisometropic spectacle correction containing cylindrical lenses. The calculations are based on dynamic spectacle magnifications rather than Prentice’s rule. If an imaginary circular object is considered, cylindrical lenses will produce elliptical far point images, which can be superimposed on the spectacle plane for comparison. The difference between left and right ellipses, in any meridian, then represents the distance the eyes have to diverge in order to fuse the object of regard. This distance can be translated into prism diopters of differential prismatic effect. Although the conventional methods for finding this effect often result in very large errors, the new method can be performed with great accuracy. In part, this is because it uses the actual eccentricities of the two eyes rather than an assumed average eccentricity. Moreover, the method includes considerations of base curves and center thickness. Contrary to the classical methods, it can thus be applied to clinically realistic lenses. (Optom Vis Sci 2000;77:211–220)

For the traditional method of determining prismatic effects, although the conventional technique for finding the effect does not take into account the actual eccentricities of the eyes, the method can be applied to clinically realistic lenses. The method uses the actual eccentricities of the eyes rather than an assumed average eccentricity. Moreover, the method includes considerations of base curves and center thickness. Contrary to the classical methods, it can thus be applied to clinically realistic lenses. (Optom Vis Sci 2000;77:211–220)

1



2

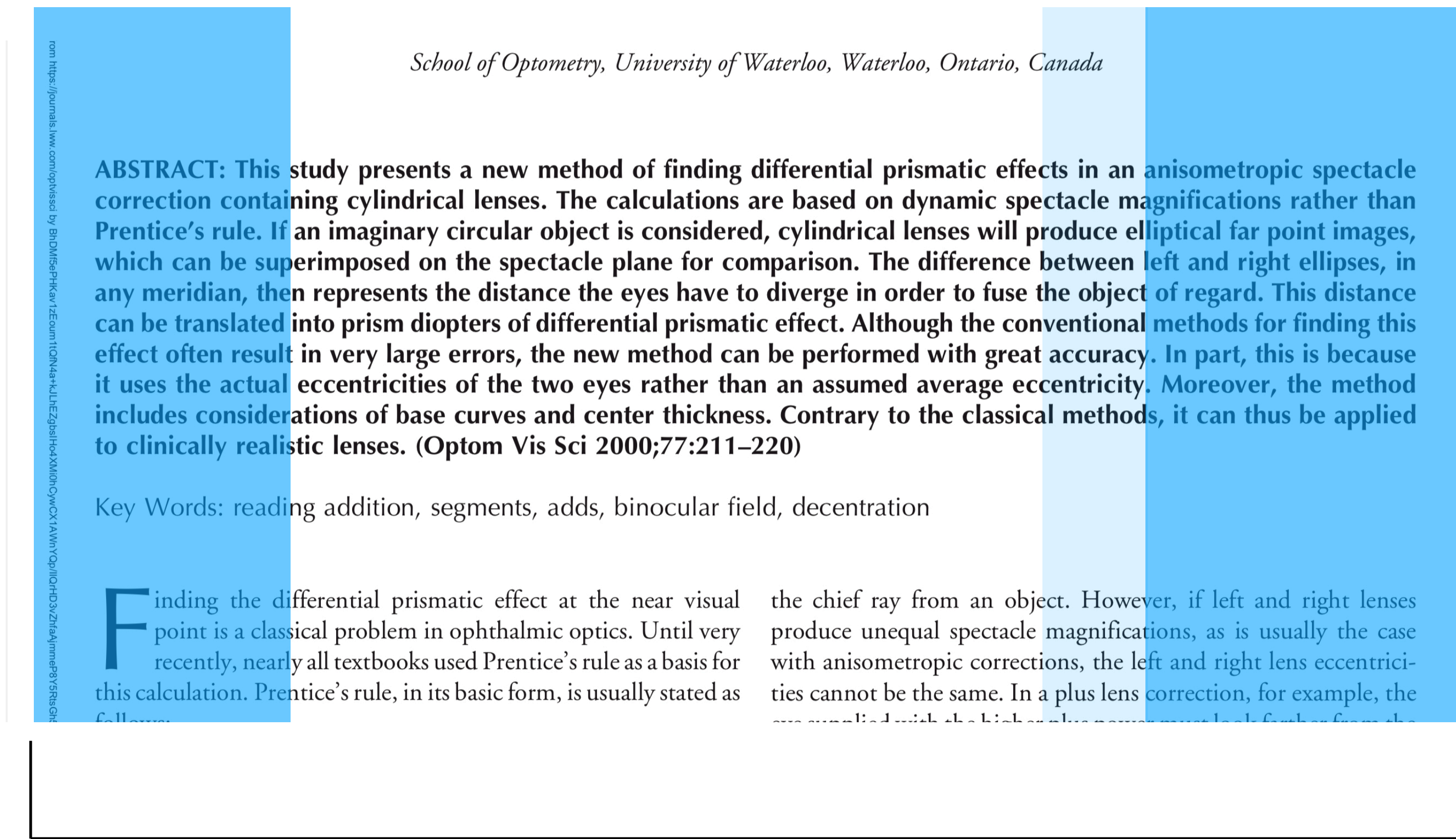


3



Downloaded from https://journals.lww.com/optvissci by BhDMf5ePHKav1zEoum1tQIN4a+KkLhZgbsIHodXM10hCQ

How I saw my my mobile phone.
Blue area = blurry vision
White area = clear vision



184,5mm / 7,26 inches
Leica Variovid Volterra Continuum

Rodenstock Impression Freesign Pro 3

33,2mm / 13.07 inches

How I saw my laptop display.
Blue area = blurry vision
White area = clear vision

OPTOMETRY AND VISION SCIENCE
Copyright © 2000 American Academy of Optometry

ORIGINAL ARTICLE

A New Method for Determining Prismatic Effects in Cylindrical Spectacle Corrections

ARNULF REMOLE, BFA, OD, MS, PhD, FAAO

School of Optometry, University of Waterloo, Waterloo, Ontario, Canada

ABSTRACT: This study presents a new method of finding differential prismatic effects in an anisometropic spectacle correction containing cylindrical lenses. The calculations are based on dynamic spectacle magnifications rather than Prentice's rule. If an imaginary circular object is considered, cylindrical lenses will produce elliptical far point images, which can be superimposed on the spectacle plane for comparison. The difference between left and right ellipses, in any meridian, then represents the distance the eyes have to diverge in order to fuse the object of regard. This distance can be translated into prism diopters of differential prismatic effect. Although the conventional methods for finding this effect often result in very large errors, the new method can be performed with great accuracy. In part, this is because it uses the actual eccentricities of the two eyes rather than an assumed average eccentricity. Moreover, the method includes considerations of base curves and center thickness. Contrary to the classical methods, it can thus be applied to clinically realistic lenses. (Optom Vis Sci 2000;77:211–220)

Downloaded from https://journals.lww.com/optvissci by BhDMf5ePHKav1zEoum1tQIN4a+KkLhZgbsIHodXM10hCQ

How I saw my my mobile phone.
Blue area = blurry vision
White area = clear vision

School of Optometry, University of Waterloo, Waterloo, Ontario, Canada

ABSTRACT: This study presents a new method of finding differential prismatic effects in an anisometric spectacle correction containing cylindrical lenses. The calculations are based on dynamic spectacle magnifications rather than Prentice's rule. If an imaginary circular object is considered, cylindrical lenses will produce elliptical far point images, which can be superimposed on the spectacle plane for comparison. The difference between left and right ellipses, in any meridian, then represents the distance the eyes have to diverge in order to fuse the object of regard. This distance can be translated into prism diopters of differential prismatic effect. Although the conventional methods for finding this effect often result in very large errors, the new method can be performed with great accuracy. In part, this is because it uses the actual eccentricities of the two eyes rather than an assumed average eccentricity. Moreover, the method includes considerations of base curves and center thickness. Contrary to the classical methods, it can thus be applied to clinically realistic lenses. (*Optom Vis Sci* 2000;77:211–220)

Key Words: reading addition, segments, adds, binocular field, decentration

Finding the differential prismatic effect at the near visual point is a classical problem in ophthalmic optics. Until very recently, nearly all textbooks used Prentice's rule as a basis for this calculation. Prentice's rule, in its basic form, is usually stated as follows:

the chief ray from an object. However, if left and right lenses produce unequal spectacle magnifications, as is usually the case with anisometropic corrections, the left and right lens eccentricities cannot be the same. In a plus lens correction, for example, the eye associated with the higher refractive error must look further from the

184,5mm / 7,26 inches
Rodenstock Impression Freesign Pro 3

Hoya Hoyalux ID Myself
33,2mm / 13.07 inches

How I saw my laptop display.
Blue area = blurry vision
White area = clear vision

OPTOMETRY AND VISION SCIENCE
Copyright © 2000 American Academy of Optometry



A New Method for Determining Prismatic Effects in Cylindrical Spectacle Corrections

ARNULF REMOLE, BFA, OD, MS, PhD, FAAO

School of Optometry, University of Waterloo, Waterloo, Ontario, Canada

ABSTRACT: This study presents a new method of finding differential prismatic effects in an anisometropic spectacle correction containing cylindrical lenses. The calculations are based on dynamic spectacle magnifications rather than Prentice's rule. If an imaginary circular object is considered, cylindrical lenses will produce elliptical far point images, which can be superimposed on the spectacle plane for comparison. The difference between left and right ellipses, in any meridian, then represents the distance the eyes have to diverge in order to fuse the object of regard. This distance can be translated into prism diopters of differential prismatic effect. Although the conventional methods for finding this effect often result in very large errors, the new method can be performed with great accuracy. In part, this is because it uses the actual eccentricities of the two eyes rather than an assumed average eccentricity. Moreover, the method includes considerations of base curves and center thickness. Contrary to the classical methods, it can thus be applied to clinically realistic lenses. (Optom Vis Sci 2000;77:211–220)

Downloaded from https://journals.lww.com/optvissci by BhDMf5ePHKav1zEoum1tQIN4a+KkLhEZgbsIHo4XMI0hCQ

How I saw my my mobile phone.
Blue area = blurry vision
White area = clear vision

School of Optometry, University of Waterloo, Waterloo, Ontario, Canada

ABSTRACT: This study presents a new method of finding differential prismatic effects in an anisometric spectacle correction containing cylindrical lenses. The calculations are based on dynamic spectacle magnifications rather than Prentice's rule. If an imaginary circular object is considered, cylindrical lenses will produce elliptical far point images, which can be superimposed on the spectacle plane for comparison. The difference between left and right ellipses, in any meridian, then represents the distance the eyes have to diverge in order to fuse the object of regard. This distance can be translated into prism diopters of differential prismatic effect. Although the conventional methods for finding this effect often result in very large errors, the new method can be performed with great accuracy. In part, this is because it uses the actual eccentricities of the two eyes rather than an assumed average eccentricity. Moreover, the method includes considerations of base curves and center thickness. Contrary to the classical methods, it can thus be applied to clinically realistic lenses. (*Optom Vis Sci* 2000;77:211-220)

Key Words: reading addition, segments, adds, binocular field, decentration

Finding the differential prismatic effect at the near visual point is a classical problem in ophthalmic optics. Until very recently, nearly all textbooks used Prentice's rule as a basis for this calculation. Prentice's rule, in its basic form, is usually stated as follows:

the chief ray from an object. However, if left and right lenses produce unequal spectacle magnifications, as is usually the case with anisometropic corrections, the left and right lens eccentricities cannot be the same. In a plus lens correction, for example, the eye associated with the higher plus power must look further from the

184,5mm / 7,26 inches

Hoya Hoyalux ID Myself

Seiko Brilliance
33,2mm / 13.07 inches

How I saw my laptop display.
Blue area = blurry vision
White area = clear vision

ORIGINAL ARTICLE

A New Method for Determining Prismatic Effects in Cylindrical Spectacle Corrections

ARNULF REMOLE, BFA, OD, MS, PhD, FFAO

School of Optometry, University of Waterloo, Waterloo, Ontario, Canada

ABSTRACT: This study presents a new method of finding differential prismatic effects in an anisometric spectacle correction containing cylindrical lenses. The calculations are based on dynamic spectacle magnifications rather than Prentice's rule. If an imaginary circular object is considered, cylindrical lenses will produce elliptical far point images, which can be superimposed on the spectacle plane for comparison. The difference between left and right ellipses, in any meridian, then represents the distance the eyes have to diverge in order to fuse the object of regard. This distance can be translated into prism diopters of differential prismatic effect. Although the conventional methods for finding this effect often result in very large errors, the new method can be performed with great accuracy. In part, this is because it uses the actual eccentricities of the two eyes rather than an assumed average eccentricity. Moreover, the method includes considerations of base curves and center thickness. Contrary to the classical methods, it can thus be applied to clinically realistic lenses. (*Optom Vis Sci* 2000;77:211–220)

[illegible]

Downloaded from <https://journals.lww.com/optivisci> by BhDMf5ePHKav1zEoum1tQnN4a+kLhEZgbsIH04XMiohC

How I saw my my mobile phone.
Blue area = blurry vision
White area = clear vision

School of Optometry, University of Waterloo, Waterloo, Ontario, Canada

ABSTRACT: This study presents a new method of finding differential prismatic effects in an anisometric spectacle correction containing cylindrical lenses. The calculations are based on dynamic spectacle magnifications rather than Prentice's rule. If an imaginary circular object is considered, cylindrical lenses will produce elliptical far point images, which can be superimposed on the spectacle plane for comparison. The difference between left and right ellipses, in any meridian, then represents the distance the eyes have to diverge in order to fuse the object of regard. This distance can be translated into prism diopters of differential prismatic effect. Although the conventional methods for finding this effect often result in very large errors, the new method can be performed with great accuracy. In part, this is because it uses the actual eccentricities of the two eyes rather than an assumed average eccentricity. Moreover, the method includes considerations of base curves and center thickness. Contrary to the classical methods, it can thus be applied to clinically realistic lenses. (Optom Vis Sci 2000;77:211-220)

Key Words: reading addition, segments, adds, binocular field, decentration

Finding the differential prismatic effect at the near visual point is a classical problem in ophthalmic optics. Until very recently, nearly all textbooks used Prentice's rule as a basis for this calculation. Prentice's rule, in its basic form, is usually stated as follows:

the chief ray from an object. However, if left and right lenses produce unequal spectacle magnifications, as is usually the case with anisometropic corrections, the left and right lens eccentricities cannot be the same. In a plus lens correction, for example, the eye supplied with the higher plus power must look further from the

184,5mm / 7,26 inches
Seiko Brilliance